

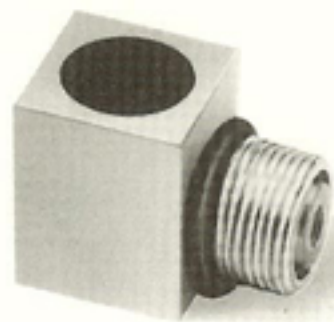
Immersion Transducers

The **Slimline Housing Style (ISL)** is an excellent choice for most immersion testing applications. This style will accommodate element diameters up to 1/2" and features a stainless steel housing for rugged dependability.

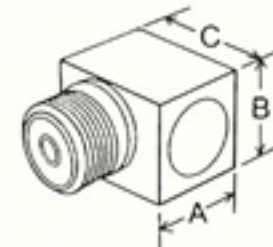
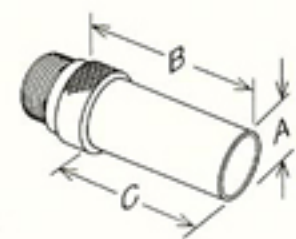
The **Right Angle Housing Style (IRA)** is an excellent choice when the application requires a sound path at a right angle to the connector such as thru-transmission testing or testing inside the diameter of bore holes or limited access areas. This style will accommodate element diameters up to 1/2" and features a stainless steel housing for rugged dependability.

The ISL and IRA Housing Styles both feature waterproof UHF connectors and epoxy lenses to optimize performance and durability. Spherical or cylindrical focusing is available to increase sensitivity to critical flaws or to improve near-surface resolution. Please refer to the chart on page 22 for practical focusing limits.

A **Right Angle Reflector (ISL-RA)** is available for the ISL Transducer to direct the sound beam 90° into hard to reach areas. Other angles are available on request.



Frequency (MHz)	Element Diameter		
	.250"	.375"	.500"
General Purpose Series (GP)			
1.0	_____	_____	ISL-0104-GP IRA-0104-GP
2.25	ISL-0202-GP IRA-0202-GP	ISL-0203-GP IRA-0203-GP	ISL-0204-GP IRA-0204-GP
3.5	ISL-0302-GP IRA-0302-GP	ISL-0303-GP IRA-0303-GP	ISL-0304-GP IRA-0304-GP
5.0	ISL-0502-GP IRA-0502-GP	ISL-0503-GP IRA-0503-GP	ISL-0504-GP IRA-0504-GP
10.0	ISL-1002-GP IRA-1002-GP	ISL-1003-GP IRA-1003-GP	ISL-1004-GP IRA-1004-GP
Very High Resolution Series (VHR)			
10.0	ISL-1002-VHR IRA-1002-VHR	ISL-1003-VHR IRA-1003-VHR	ISL-1004-VHR IRA-1004-VHR
15.0	ISL-1502-VHR IRA-1502-VHR	ISL-1503-VHR IRA-1503-VHR	_____
20.0	ISL-2002-VHR IRA-2002-VHR	_____	_____
25.0	ISL-2502-VHR IRA-2502-VHR	_____	_____
High Resolution Series (HR)			
2.25	ISL-0202-HR IRA-0202-HR	ISL-0203-HR IRA-0203-HR	ISL-0204-HR IRA-0204-HR
3.5	ISL-0302-HR IRA-0302-HR	ISL-0303-HR IRA-0303-HR	ISL-0304-HR IRA-0304-HR
5.0	ISL-0502-HR IRA-0502-HR	ISL-0503-HR IRA-0503-HR	ISL-0504-HR IRA-0504-HR
10.0	ISL-1002-HR IRA-1002-HR	ISL-1003-HR IRA-1003-HR	ISL-1004-HR IRA-1004-HR
15.0	ISL-1502-HR IRA-1502-HR	ISL-1503-HR IRA-1503-HR	_____
20.0	ISL-2002-HR IRA-2002-HR	_____	_____
25.0	ISL-2502-HR IRA-2502-HR	_____	_____



DIMENSIONS (ISL)		
A	B	C
.625"	1.675"	1.360"

DIMENSIONS (IRA)			
Element	A	B	C
.250"	.75"	.75"	.94"
.375"	.75"	.75"	.94"
.500"	.75"	.75"	.94"